

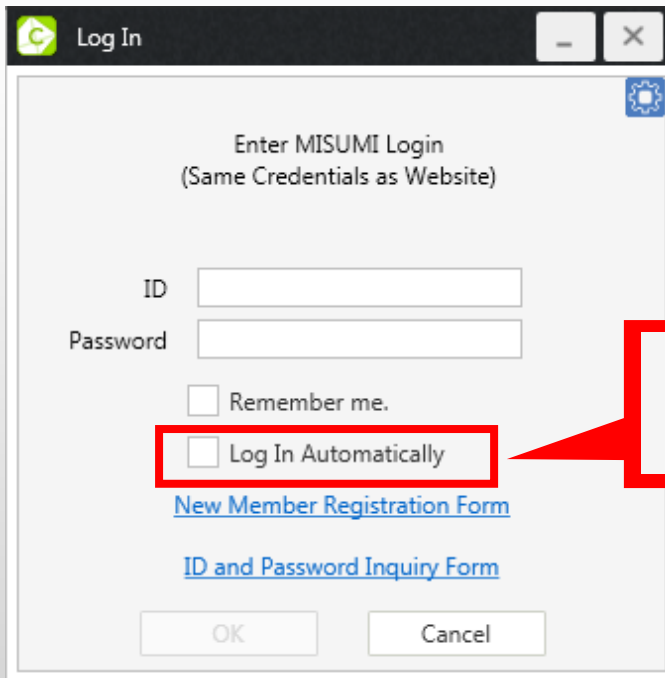
Information Ver.2.4

- 1 Auto login
- 2 Favorites
- 3 Assign a file name
- 4 Customize property settings

“Auto login” feature is added.
No need to put the ID and Password every time.

■ How to use

When you log in , check the box of “Login Automatically” in the login screen



Log In Automatically

※To cancel setting, click “Settings” in the model selection screen.

After issue the part number, you can add it to the “Favorites”.
No need to search and issue part number of your favorites.

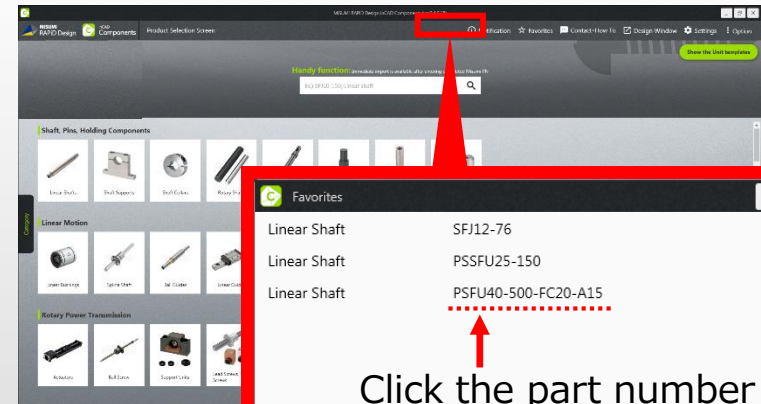
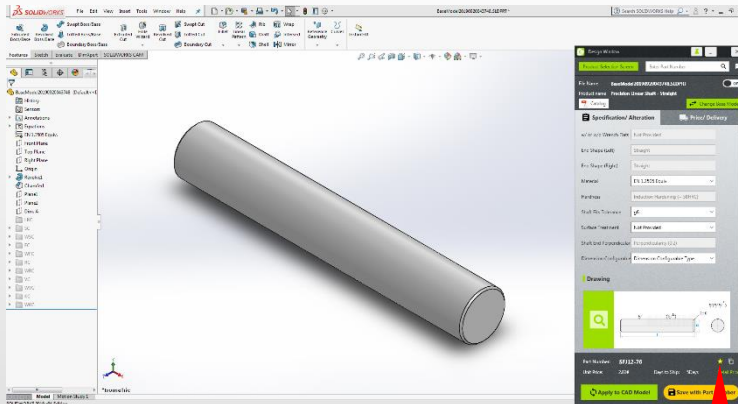
■ How to use

1. After issue the part number, click “☆” in the design window.

It will be added to “Favorites” list.

2. Click “Favorites” in the model selection screen to see your “Favorites” list.

Once you click on a part number available on the list, this be added to the CAD software .



Click the part number to import

A part number can now be saved with delimiters. You can assign a specific name.

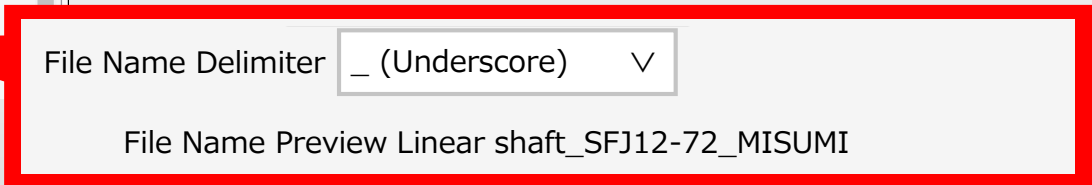
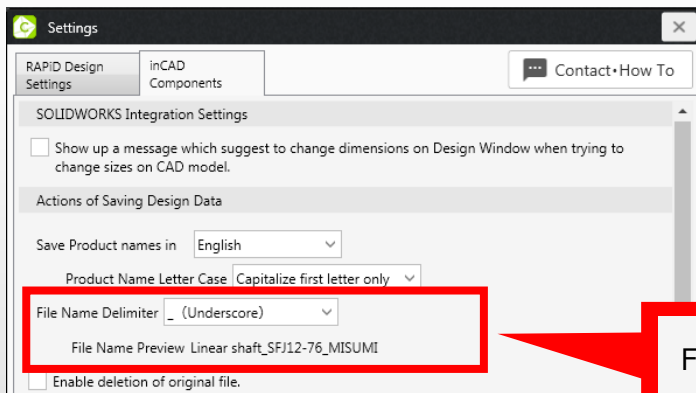
■ How to use

Click "Settings" in the model selection screen and select the type of delimiters.

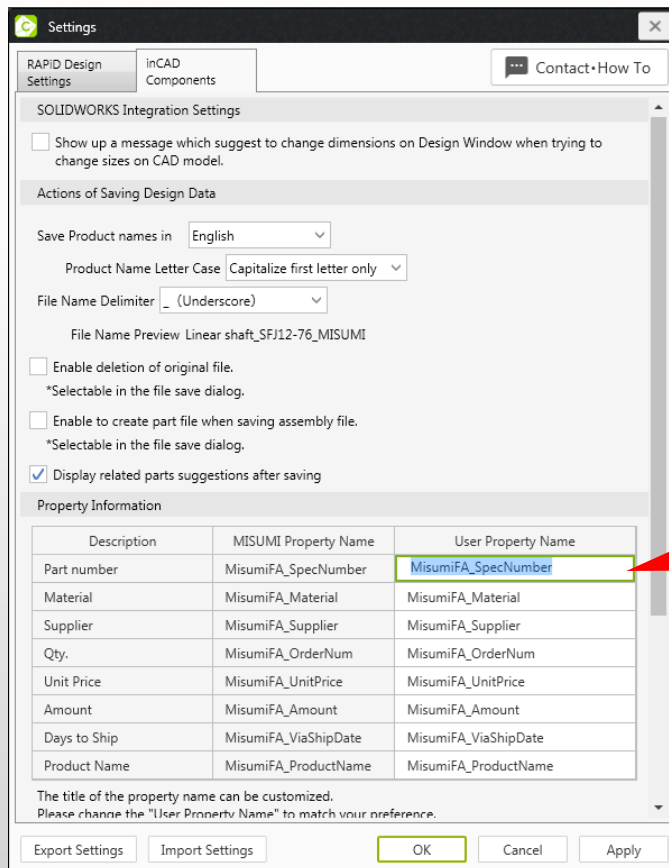
Delimiters available:

" _ " , " - " , " " (Space)

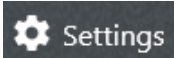
○ ○ _ part number _ × × .sldprt
 ↑ ↑ delimiters



You can customize the property name in RAPiD Design.



■ How to use

Open "Settings"  from the top right of the model selection screen and double click on "User Property Name" in [inCAD Components] tab.

User Property Name

MisumiFA_SpecNumber

The banner will be appeared after login.

Click "[Download now free](#)" to start download the update file.

„There is system update available.

Do you like to download the latest version?

※ The download process will take some minutes."